

DISCLOSURE PLAN FOR PROPOSED LOT 20

Proposed Lot 20 is currently described as part of Lot 5 on RP159050, situated at Maudsland on Kopps Road.

The Planning & Environmental Court Order BD4979 of 2016 included Proposed Lot 20 and was approved by The Planning & Environmental Court on the 24 March 2017, subject to conditions.

LEGEND

- 6.0 — EXISTING SURFACE LEVEL CONTOUR (0.5m INTERVAL)
- - - +6.0 - - - DESIGN FILL CONTOUR (0.5m INTERVAL)
- 6.0 — DESIGN SURFACE LEVEL CONTOUR (0.5m INTERVAL)
- AREA OF FILL
- - - FOR RETAINING WALL CONSTRUCTION DETAIL
SEE ENGINEERING CIVIL O.P.W. PLANS

Builders Note:

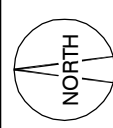
Builders shall not build off the design levels shown; a site survey is required. This note is an integral part of this plan.

Engineering Note:

Engineering design information supplied digitally by Mortons Urban Solutions, October 2017

Compaction Statement:

All earthworks shall be carried out in accordance with AS3798 -2007 with a testing regime in accordance with AS2007-1996 and further compaction methodology in accordance with AS3798-1996



Local Authority: Gold Coast City
Height Datum: AHD
Height Origin: PM172323 RL 39.402
Contour Interval: 0.5 m
Fill Contours: CUTFILL_DISCLOSURE
ENG: DISCLOSURE.INFO
BDY: 129584-LOTS-2017-08-10
Surveyor: AJC
Drawn: BJB
Scale: 1:300 @ A3
Date: 17 OCTOBER 2017
Dwg No: 129584-DISC-5/20

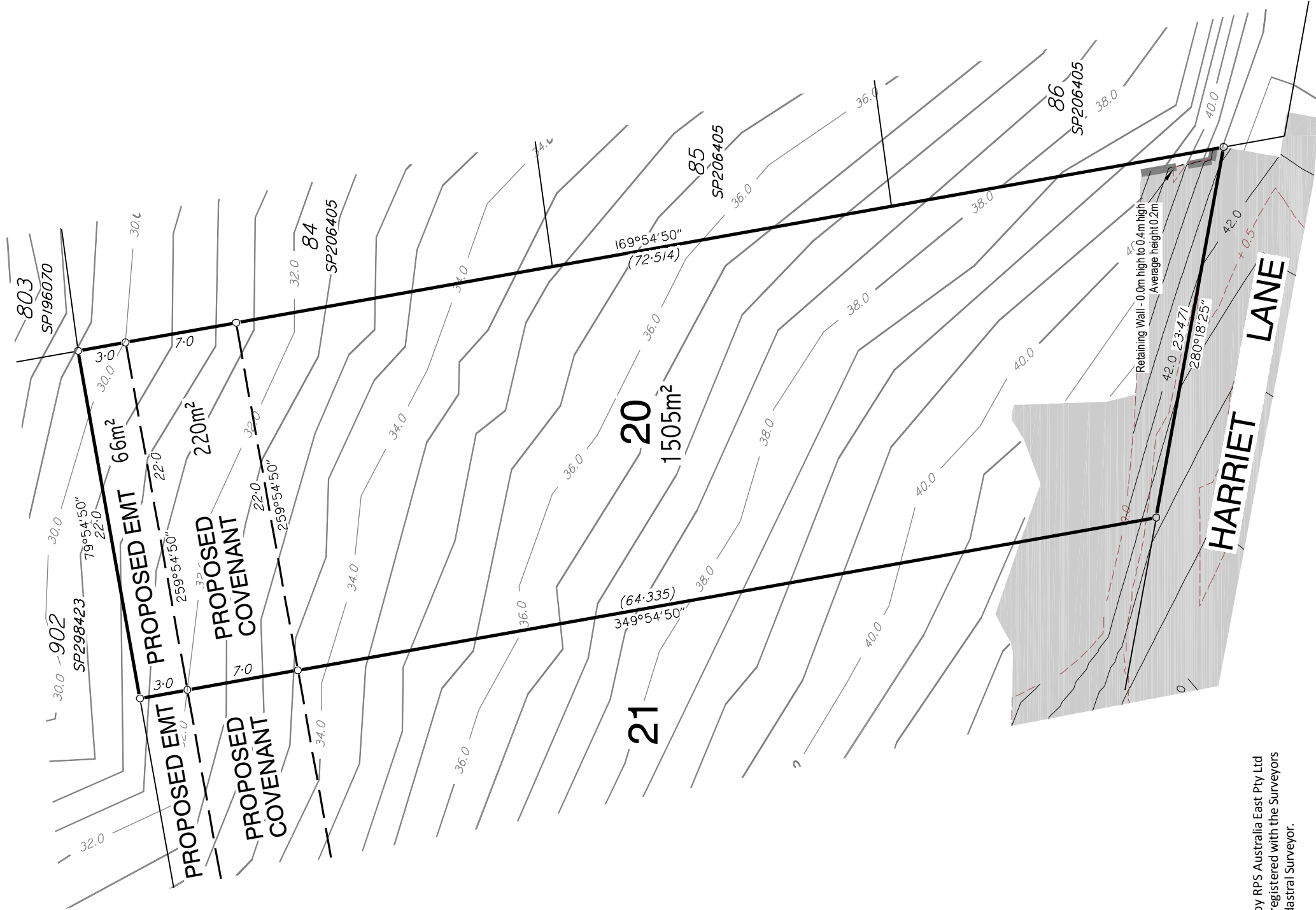
URBEX No. 110 Pty Ltd



RPS Australia East Pty Ltd
ACN 140 292 762
ABN 44 140 292 762
Lakeside Corporate Space, Suite 425, Level 2
Building 4, 34-36 Glenferrie Drive,
Robina PO Box 1048 Robina DC, Qld 4226

T +61 7 555 36900
F +61 7 555 36999
W rpsgroup.com.au

© COPYRIGHT PROTECTS THIS PLAN
Unauthorised reproduction or amendment
not permitted. Please contact the author.



Note:
This plan has been prepared by RPS Australia East Pty Ltd (ACN 140 292 762), which is registered with the Surveyors Board of Queensland as a Cadastral Surveyor.

DISCLOSURE PLAN

FOR PROPOSED LOT 21

Proposed Lot 21 is currently described as part of Lot 5 on RP159050, situated at Maudsland on Kopps Road.

The Planning & Environmental Court Order BD4979 of 2016 included Proposed Lot 21 and was approved by The Planning & Environmental Court on the 24 March 2017, subject to conditions.

LEGEND

- 6.0 — EXISTING SURFACE LEVEL CONTOUR (0.5m INTERVAL)
- - - +6.0 - - - DESIGN FILL CONTOUR (0.5m INTERVAL)
- 6.0 — DESIGN SURFACE LEVEL CONTOUR (0.5m INTERVAL)
- AREA OF FILL
- — — FOR RETAINING WALL CONSTRUCTION DETAIL
SEE ENGINEERING CIVIL O.P.W. PLANS

Builders Note:

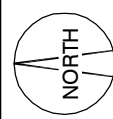
Builders shall not build off the design levels shown; a site survey is required. This note is an integral part of this plan.

Engineering Note:

Engineering design information supplied digitally by Mortons Urban Solutions, October 2017

Compaction Statement:

All earthworks shall be carried out in accordance with AS3798 -2007 with a testing regime in accordance with AS2007-1996 and further compaction methodology in accordance with AS3798-1996



Local Authority: Gold Coast City
Height Datum: AHD
Height Origin: PMI72323 RL 39.402
Contour Interval: 0.5 m
Fill Contours: CUTFILL_DISCLOSURE
ENG: DISCLOSURE.INFO
BDY: I29584-LOTS-2017-08-10
Surveyor: AJC
Drawn: BJB
Scale: 1:300 @ A3
Date: 17 OCTOBER 2017
Dwg No: I29584-DISC-5/21

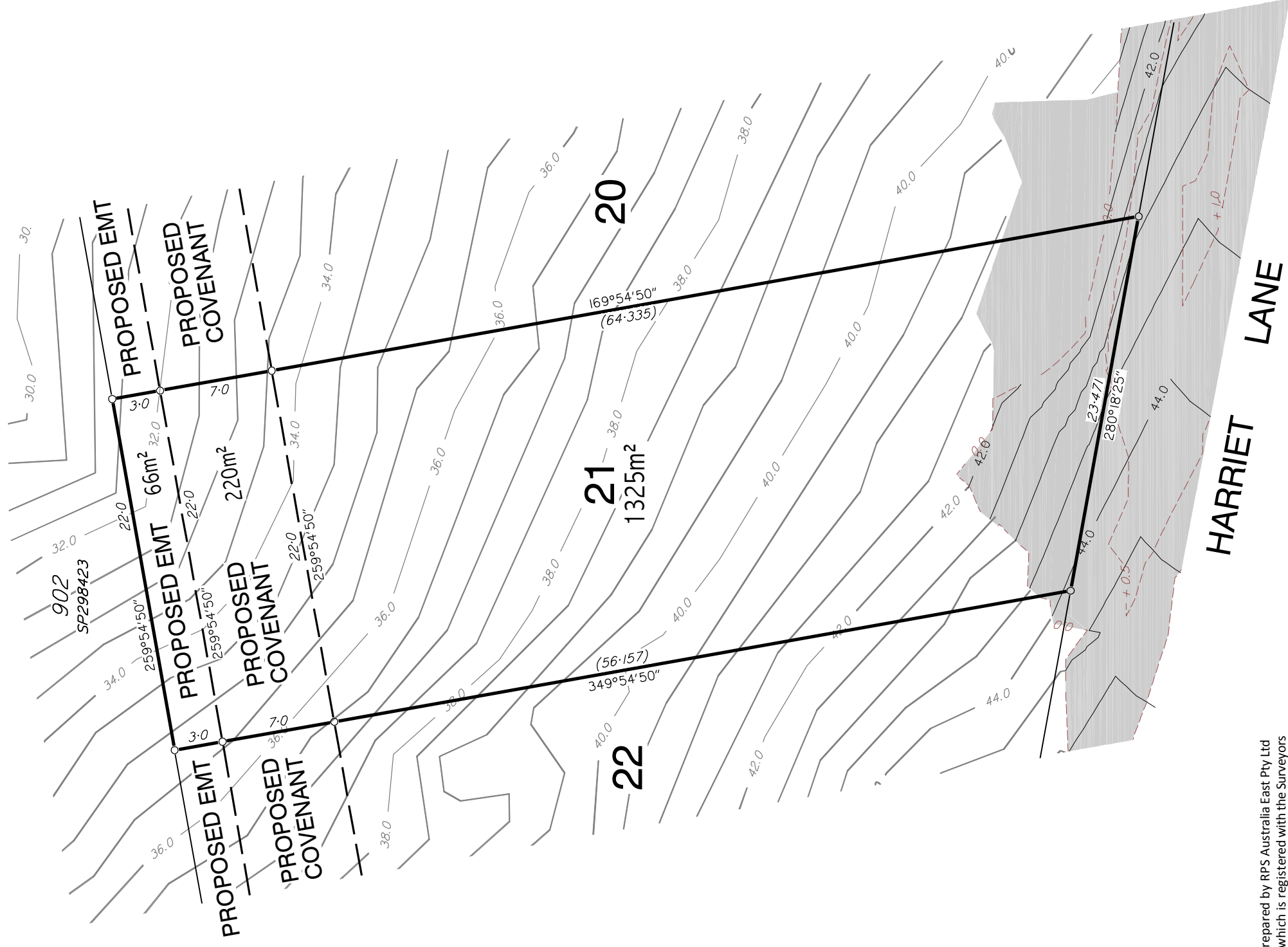
URBEX No. 110 Pty Ltd



RPS Australia East Pty Ltd
ACN 140 292 762
ABN 44 140 292 762
Lakeside Corporate Space, Suite 425, Level 2
Building 4, 34-36 Glenferrie Drive,
Robina PO Box 1048 Robina DC, Qld 4226

T +61 7 555 36900
F +61 7 555 36999
W rpsgroup.com.au

© COPYRIGHT PROTECTS THIS PLAN
Unauthorised reproduction or amendment
not permitted. Please contact the author.



Note:



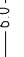


This plan has been prepared by RPS Australia East Pty Ltd (ACN 140 292 762), which is registered with the Surveyors Board of Queensland as a Cadastral Surveyor.

DISCLOSURE PLAN

FOR PROPOSED LOT 22

Proposed Lot 22 is currently described as part of Lot 5 on RP159050, situated at Maudsland on Kopps Road.

The Planning & Environmental Court Order BD4979 of 2016 included Proposed Lot 22 and was approved by The Planning & Environmental Court on the 24 March 2017, subject to conditions.

LEGEND	
	EXISTING SURFACE LEVEL CONTOUR (0.5m INTERVAL)
	DESIGN FILL CONTOUR (0.5m INTERVAL)
	DESIGN SURFACE LEVEL CONTOUR (0.5m INTERVAL)
	AREA OF FILL
	FOR RETAINING WALL CONSTRUCTION DETAIL SEE ENGINEERING CIVIL O.P.W. PLANS

Builders Note:

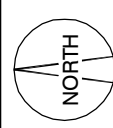
Builders shall not build off the design levels shown; a site survey is required. This note is an integral part of this plan.

Engineering Note:

Engineering design information supplied digitally by Mortons Urban Solutions, October 2017

Compaction Statement:

All earthworks shall be carried out in accordance with AS3798 -2007 with a testing regime in accordance with AS2007-1996 and further compaction methodology in accordance with AS3798-1996



Local Authority: Gold Coast City
Height Datum: AHD
Height Origin: PMI72323 RL 39.402
Contour Interval: 0.5 m
Fill Contours: CUTFILL_DISCLOSURE
ENG: DISCLOSURE.INFO
BDY: I29584-LOTS-2017-08-10
Surveyor: AJC
Drawn: BJB
Scale: 1:300 @ A3
Date: 17 OCTOBER 2017
Dwg No: I29584-DISC-5/22

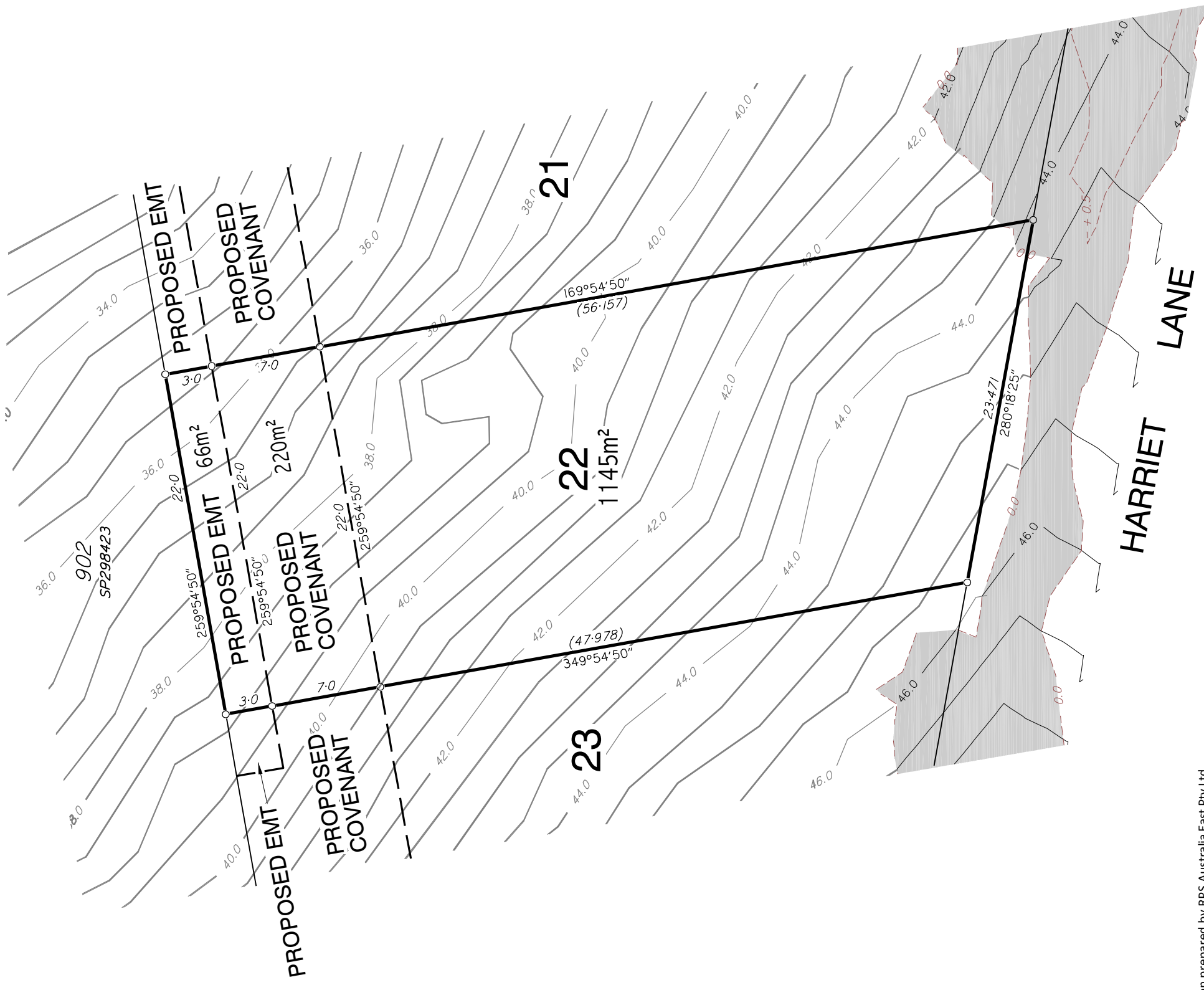
URBEX No. 110 Pty Ltd



RPS Australia East Pty Ltd
ACN 140 292 762
ABN 44 140 292 762
Lakeside Corporate Space, Suite 425, Level 2
Building 4, 34-36 Glenferrie Drive,
Robina PO Box 1048 Robina DC, Qld 4226

T +61 7 555 36900
F +61 7 555 36999
W rpsgroup.com.au

© COPYRIGHT PROTECTS THIS PLAN
Unauthorised reproduction or amendment
not permitted. Please contact the author.



Note:






This plan has been prepared by RPS Australia East Pty Ltd (ACN 140 292 762), which is registered with the Surveyors Board of Queensland as a Cadastral Surveyor.

DISCLOSURE PLAN

FOR PROPOSED LOT 23

Proposed Lot 23 is currently described as part of Lot 5 on RP159050, situated at Maudsland on Kopps Road.

The Planning & Environmental Court Order BD4979 of 2016 included Proposed Lot 23 and was approved by The Planning & Environmental Court on the 24 March 2017, subject to conditions.

LEGEND	
	EXISTING SURFACE LEVEL CONTOUR (0.5m INTERVAL)
	DESIGN FILL CONTOUR (0.5m INTERVAL)
	DESIGN SURFACE LEVEL CONTOUR (0.5m INTERVAL)
	AREA OF FILL
	FOR RETAINING WALL CONSTRUCTION DETAIL SEE ENGINEERING CIVIL O.P.W. PLANS

Builders Note:

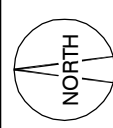
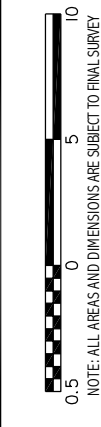
Builders shall not build off the design levels shown; a site survey is required. This note is an integral part of this plan.

Engineering Note:

Engineering design information supplied digitally by Mortons Urban Solutions, October 2017

Compaction Statement:

All earthworks shall be carried out in accordance with AS3798 -2007 with a testing regime in accordance with AS2007-1996 and further compaction methodology in accordance with AS3798-1996



Local Authority: Gold Coast City
Height Datum: AHD
Height Origin: PMI72323 RL 39.402
Contour Interval: 0.5 m
Fill Contours: CUTFILL_DISCLOSURE
ENG: DISCLOSURE.INFO
BDY: I29584-LOTS-2017-08-10
Surveyor: AJC
Drawn: BJB
Scale: 1:300 @ A3
Date: 17 OCTOBER 2017
Dwg No: I29584-DISC-5/23

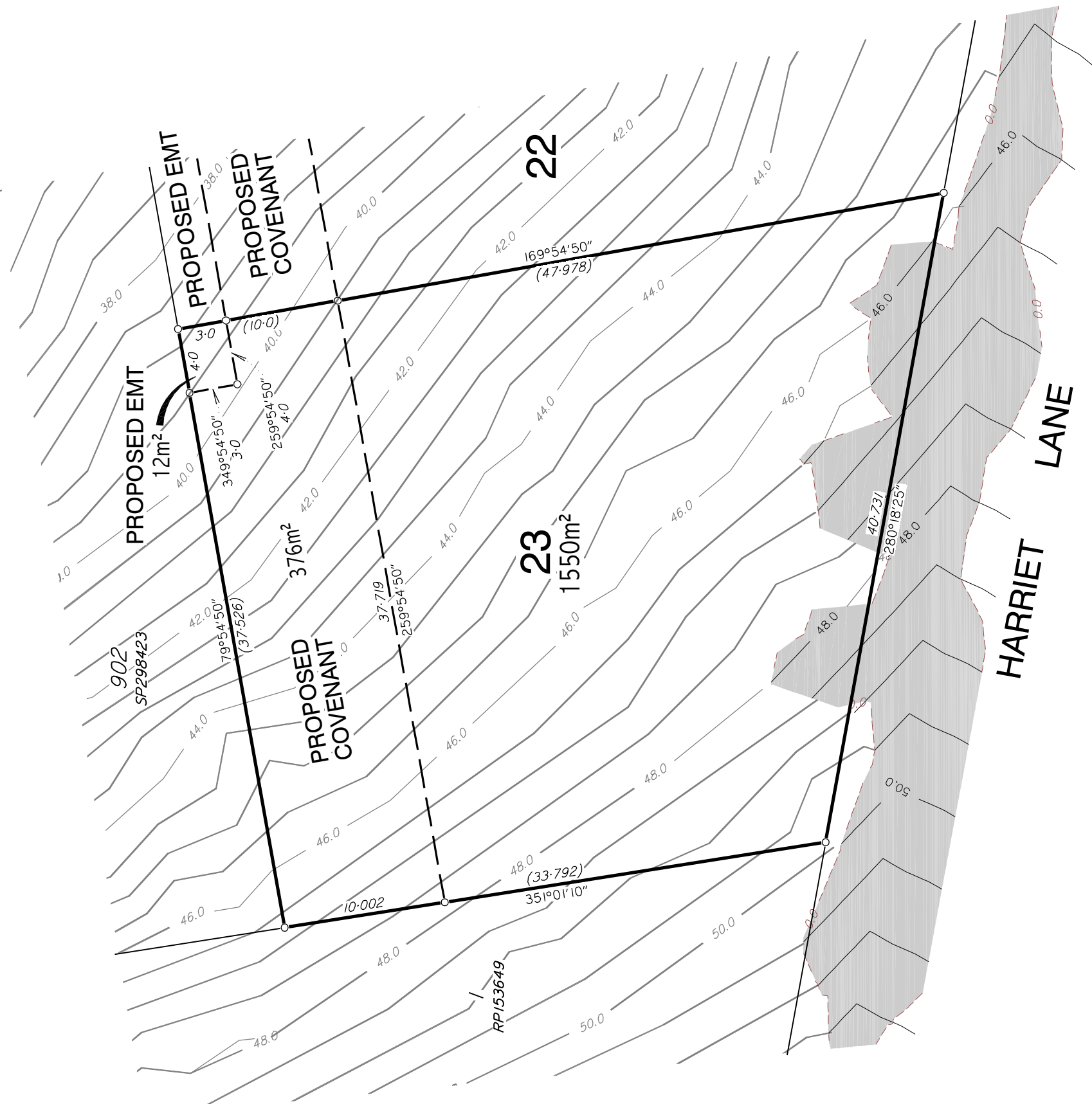
URBEX No. 110 Pty Ltd



RPS Australia East Pty Ltd
ACN 140 292 762
ABN 44 140 292 762
Lakeside Corporate Space, Suite 425, Level 2
Building 4, 34-36 Glenferrie Drive,
Robina PO Box 1048 Robina DC, Qld 4226

T +61 7 555 36900
F +61 7 555 36999
W rpsgroup.com.au

© COPYRIGHT PROTECTS THIS PLAN
Unauthorised reproduction or amendment
not permitted. Please contact the author.





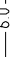


Note:
This plan has been prepared by RPS Australia East Pty Ltd (ACN 140 292 762), which is registered with the Surveyors Board of Queensland as a Cadastral Surveyor.

DISCLOSURE PLAN

FOR PROPOSED LOT 24

Proposed Lot 24 is currently described as part of Lot 1 on RP159050, situated at Maudsland on Kopps Road.

The Planning & Environmental Court Order BD4979 of 2016 included Proposed Lot 24 and was approved by The Planning & Environmental Court on the 24 March 2017, subject to conditions.

LEGEND	
	EXISTING SURFACE LEVEL CONTOUR (0.5m INTERVAL)
	DESIGN FILL CONTOUR (0.5m INTERVAL)
	DESIGN SURFACE LEVEL CONTOUR (0.5m INTERVAL)
	AREA OF FILL
	FOR RETAINING WALL CONSTRUCTION DETAIL SEE ENGINEERING CIVIL O.P.W. PLANS

Builders Note:

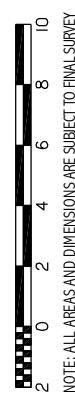
Builders shall not build off the design levels shown; a site survey is required. This note is an integral part of this plan.

Engineering Note:

Engineering design information supplied digitally by Mortons Urban Solutions, October 2017

Compaction Statement:

All earthworks shall be carried out in accordance with AS3798 -2007 with a testing regime in accordance with AS2007-1996 and further compaction methodology in accordance with AS3798-1996



Local Authority: Gold Coast City
Height Datum: AHD
Height Origin: PMI72323 RL 39.402
Contour Interval: 0.5 m
Fill Contours: CUTFILL_DISCLOSURE
ENG: DISCLOSURE.INFO
BDY: I29584-LOTS-2017-08-10
Surveyor: AJC
Drawn: BJB
Scale: 1:250 @ A3
Date: 17 OCTOBER 2017
Dwg No: I29584-DISC-5/24

URBEX No. 110 Pty Ltd



RPS Australia East Pty Ltd
ACN 140 292 762
ABN 44 140 292 762
Lakeside Corporate Space, Suite 425, Level 2
Building 4, 34-36 Glenferrie Drive,
Robina PO Box 1048 Robina DC, Qld 4226

T +61 7 555 36900
F +61 7 555 36999
W rpsgroup.com.au

© COPYRIGHT PROTECTS THIS PLAN
Unauthorised reproduction or amendment
not permitted. Please contact the author.



Note:






This plan has been prepared by RPS Australia East Pty Ltd (ACN 140 292 762), which is registered with the Surveyors Board of Queensland as a Cadastral Surveyor.

DISCLOSURE PLAN

FOR PROPOSED LOT 25

Proposed Lot 25 is currently described as part of Lot 1 on RP159050, situated at Maudsland on Kopps Road.

The Planning & Environmental Court Order BD4979 of 2016 included Proposed Lot 25 and was approved by The Planning & Environmental Court on the 24 March 2017, subject to conditions.

LEGEND	
	EXISTING SURFACE LEVEL CONTOUR (0.5m INTERVAL)
	DESIGN FILL CONTOUR (0.5m INTERVAL)
	DESIGN SURFACE LEVEL CONTOUR (0.5m INTERVAL)
	AREA OF FILL
	FOR RETAINING WALL CONSTRUCTION DETAIL SEE ENGINEERING CIVIL O.P.W. PLANS

Builders Note:

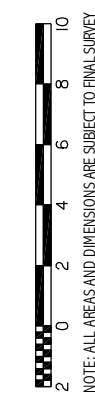
Builders shall not build off the design levels shown; a site survey is required. This note is an integral part of this plan.

Engineering Note:

Engineering design information supplied digitally by Mortons Urban Solutions, October 2017

Compaction Statement:

All earthworks shall be carried out in accordance with AS3798 -2007 with a testing regime in accordance with AS2007-1996 and further compaction methodology in accordance with AS3798-1996



Local Authority: Gold Coast City
Height Datum: AHD
Height Origin: PMI72323 RL 39.402
Contour Interval: 0.5 m
Fill Contours: CUTFILL_DISCLOSURE
ENG: DISCLOSURE.INFO
BDY: I29584-LOTS-2017-08-10
Surveyor: AJC
Drawn: BJB
Scale: 1:250 @ A3
Date: 17 OCTOBER 2017
Dwg No: I29584-DISC-5/25

URBEX No. 110 Pty Ltd



RPS Australia East Pty Ltd
ACN 140 292 762
ABN 44 140 292 762
Lakeside Corporate Space, Suite 425, Level 2
Building 4, 34-36 Glenferrie Drive,
Robina PO Box 1048 Robina DC, Qld 4226

T +61 7 555 36900
F +61 7 555 36999
W rpsgroup.com.au

© COPYRIGHT PROTECTS THIS PLAN
Unauthorised reproduction or amendment
not permitted. Please contact the author.



Note:

This plan has been prepared by RPS Australia East Pty Ltd (ACN 140 292 762), which is registered with the Surveyors Board of Queensland as a Cadastral Surveyor.

DISCLOSURE PLAN

FOR PROPOSED LOT 26

Proposed Lot 26 is currently described as part of Lot 1 on RP159050, situated at Maudsland on Kopps Road.

The Planning & Environmental Court Order BD4979 of 2016 included Proposed Lot 26 and was approved by The Planning & Environmental Court on the 24 March 2017, subject to conditions.

LEGEND

- EXISTING SURFACE LEVEL CONTOUR (0.5m INTERVAL)
- DESIGN FILL CONTOUR (0.5m INTERVAL)
- DESIGN SURFACE LEVEL CONTOUR (0.5m INTERVAL)
- AREA OF FILL
- FOR RETAINING WALL CONSTRUCTION DETAIL SEE ENGINEERING CIVIL O.P.W. PLANS

Builders Note:

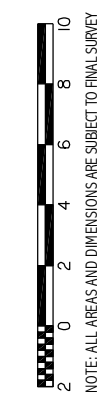
Builders shall not build off the design levels shown; a site survey is required. This note is an integral part of this plan.

Engineering Note:

Engineering design information supplied digitally by Mortons Urban Solutions, October 2017

Compaction Statement:

All earthworks shall be carried out in accordance with AS3798-2007 with a testing regime in accordance with AS2007-1996 and further compaction methodology in accordance with AS3798-1996



NOTE: ALL AREAS AND DIMENSIONS ARE SUBJECT TO FINAL SURVEY

Local Authority: Gold Coast City
Height Datum: AHD
Height Origin: PM172323 RL 39.402
Contour Interval: 0.5 m
Fill Contours: CUTFILL_DISCLOSURE
ENG: DISCLOSURE.INFO
BDY: I29584-LOTS-2017-08-10
Surveyor: AJC
Drawn: BJB
Scale: 1:250 @ A3
Date: 17 OCTOBER 2017
Dwg No: I29584-DISC-5/26

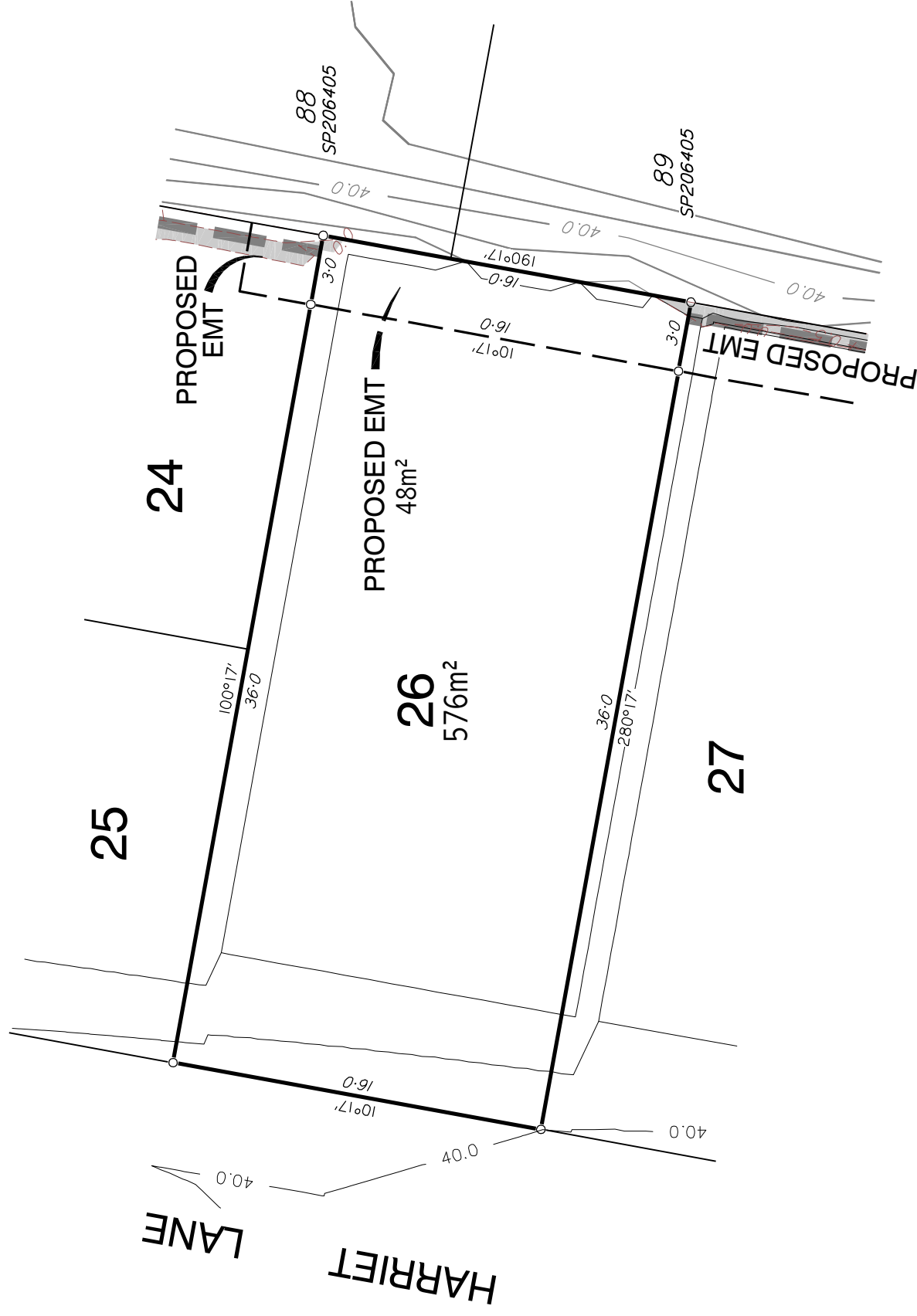
URBEX No. 110 Pty Ltd



RPS Australia East Pty Ltd
 ACN 140 292 762
 ABN 44 140 292 762
 Lakeside Corporate Space, Suite 425, Level 2
 Building 4, 34-36 Glenferrie Drive,
 Robina PO Box 1048 Robina DC, Qld 4226

T +61 7 555 36900
F +61 7 555 36999
W rpsgroup.com.au

© COPYRIGHT PROTECTS THIS PLAN
 Unauthorised reproduction or amendment
 not permitted. Please contact the author.



Note:






This plan has been prepared by RPS Australia East Pty Ltd (ACN 140 292 762), which is registered with the Surveyors Board of Queensland as a Cadastral Surveyor.

DISCLOSURE PLAN

FOR PROPOSED LOT 27

Proposed Lot 27 is currently described as part of Lot 1 on RP159050, situated at Maudsland on Kopps Road.

The Planning & Environmental Court Order BD4979 of 2016 included Proposed Lot 27 and was approved by The Planning & Environmental Court on the 24 March 2017, subject to conditions.

LEGEND	
 6.0	EXISTING SURFACE LEVEL CONTOUR (0.5m INTERVAL)
 +6.0	DESIGN FILL CONTOUR (0.5m INTERVAL)
 6.0	DESIGN SURFACE LEVEL CONTOUR (0.5m INTERVAL)
	AREA OF FILL
	FOR RETAINING WALL CONSTRUCTION DETAIL SEE ENGINEERING CIVIL O.P.W. PLANS

Builders Note:

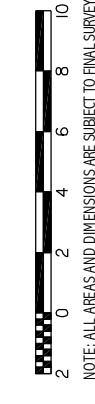
Builders shall not build off the design levels shown; a site survey is required. This note is an integral part of this plan.

Engineering Note:

Engineering design information supplied digitally by Mortons Urban Solutions. October 2017

Compaction Statement:

All earthworks shall be carried out in Accordance with AS3798 -2007 with a testing regime in accordance with AS2007-1996 and further compaction methodology in Accordance with AS3798-1996



Local Authority: Gold Coast City
Height Datum: AHD
Height Origin: PMI72323 RL 39.402
Contour Interval: 0.5 m
Fill Contours: CUTFILL_DISCLOSURE
ENG: DISCLOSURE.INFO
BDY: I29584-LOTS-2017-08-10
Surveyor: AJC
Drawn: BJB
Scale: 1:250 @ A3
Date: 17 OCTOBER 2017
Dwg No: I29584-DISC-5/27

URBEX No. 110 Pty Ltd

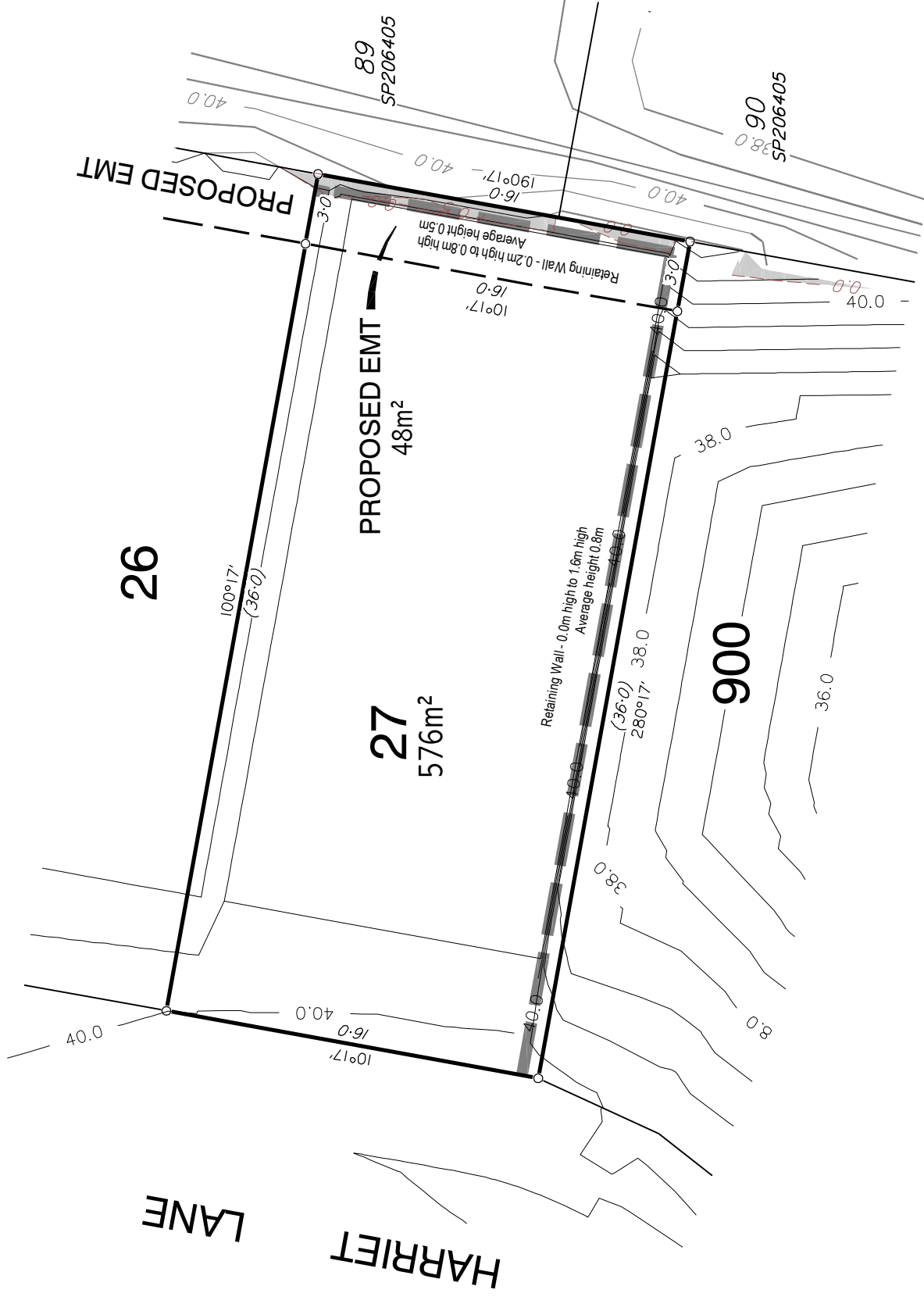


RPS Australia East Pty Ltd
ACN 140 292 762
ABN 44 140 292 762

Lakeside Corporate Space, Suite 425, Level 2
Building 4, 34-36 Glenferrie Drive,
Robina PO Box 1048 Robina DC, Qld 4226

T +61 7 555 36900
F +61 7 555 36999
W rpsgroup.com.au

© COPYRIGHT PROTECTS THIS PLAN
Unauthorised reproduction or amendment
not permitted. Please contact the author.



Note:

This plan has been prepared by RPS Australia East Pty Ltd (ACN 140 292 762), which is registered with the Surveyors Board of Queensland as a Cadastral Surveyor.