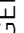







# DISCLOSURE PLAN

## FOR PROPOSED LOT 44

Proposed Lot 44 is currently described as part of Lot 1 on RP159050, situated at Maudsland on Kopps Road.

The Planning & Environmental Court Order BD4979 of 2016 included Proposed Lot 44 and was approved by The Planning & Environmental Court on the 24 March 2017, subject to conditions.

LEGEND	
	EXISTING SURFACE LEVEL CONTOUR (0.5m INTERVAL)
	DESIGN FILL CONTOUR (0.5m INTERVAL)
	DESIGN SURFACE LEVEL CONTOUR (0.5m INTERVAL)
	AREA OF FILL
	FOR RETAINING WALL CONSTRUCTION DETAIL SEE ENGINEERING CIVIL O.P.W. PLANS
	COVENANT AREA DELINEATION FENCING

### Builders Note:

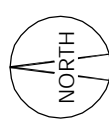
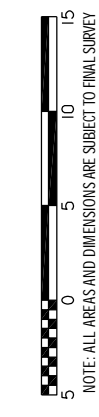
Builders shall not build off the design levels shown; a site survey is required. This note is an integral part of this plan.

### Engineering Note:

Engineering design information supplied digitally by Mortons Urban Solutions. September 2018

### Compaction Statement:

All earthworks shall be carried out in Accordance with AS3798 -2007 with a testing regime in accordance with AS2007-1996 and further compaction methodology in Accordance with AS3798-1996



Local Authority : Gold Coast City
Height Datum : AHD
Height Origin: PMI72323 RL 39.402
Contour Interval : 0.5 m
Fill Contours : CUTFILL_DISCLOSURE
ENG : DCONT_DISCLOSURE
BDY : I29584-LOTS-2017-08-10
Surveyor: AJC
Drawn : BJB
Scale : 1:250 @ A3
Date: 7 DECEMBER 2018
Dwg No: I29584-DISC-5b/44

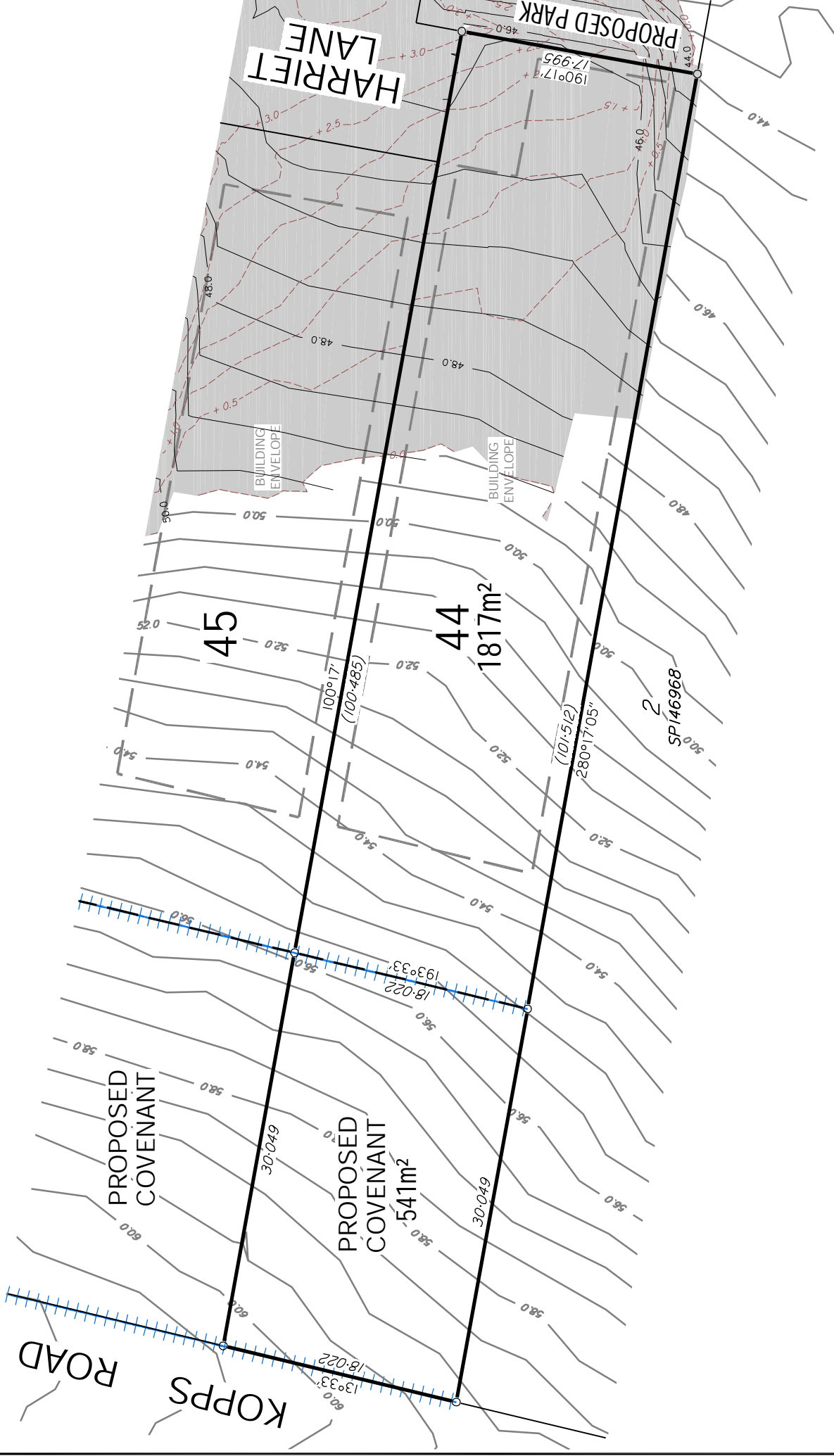
URBEX No. 110 Pty Ltd



RPS Australia East Pty Ltd  
 ACN 140 292 762  
 ABN 44 140 292 762  
 Lakeside Corporate Space, Suite 425, Level 2  
 Building 4, 34-36 Glenferrie Drive,  
 Robina PO Box 1048 Robina DC, Qld 4226

T +61 7 555 36900  
 F +61 7 555 36999  
 W rpsgroup.com.au

© COPYRIGHT PROTECTS THIS PLAN  
 Unauthorised reproduction or amendment  
 not permitted. Please contact the author.



### Note:

This plan has been prepared by RPS Australia East Pty Ltd (ACN 140 292 762), which is registered with the Surveyors Board of Queensland as a Cadastral Surveyor.

# DISCLOSURE PLAN

## FOR PROPOSED LOT 45

Proposed Lot 45 is currently described as part of Lot 1 on RP159050, situated at Maudsland on Kopps Road.

The Planning & Environmental Court Order BD4979 of 2016 included Proposed Lot 45 and was approved by The Planning & Environmental Court on the 24 March 2017, subject to conditions.

### LEGEND

- 6.0 — EXISTING SURFACE LEVEL CONTOUR (0.5m INTERVAL)
- - - +6.0 - - - DESIGN FILL CONTOUR (0.5m INTERVAL)
- 6.0 — DESIGN SURFACE LEVEL CONTOUR (0.5m INTERVAL)
- AREA OF FILL
- — — FOR RETAINING WALL CONSTRUCTION DETAIL SEE ENGINEERING CIVIL O.P.W. PLANS
- +++++ COVENANT AREA DELINEATION FENCING

### Builders Note:

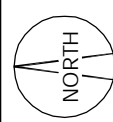
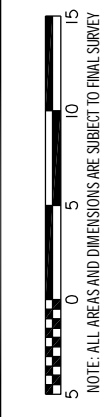
Builders shall not build off the design levels shown; a site survey is required. This note is an integral part of this plan.

### Engineering Note:

Engineering design information supplied digitally by Mortons Urban Solutions. September 2018

### Compaction Statement:

All earthworks shall be carried out in accordance with AS3798 -2007 with a testing regime in accordance with AS2007-1996 and further compaction methodology in accordance with AS3798-1996



Local Authority: Gold Coast City
Height Datum: AHD
Height Origin: PMI72323 RL 39.402
Contour Interval: 0.5 m
Fill Contours: CUTFILL_DISCLOSURE
ENG: DCONT_DISCLOSURE
BDY: I29584-LOTS-2017-08-10
Surveyor: AJC
Drawn: BJB
Scale: 1: 400 @ A3
Date: 7 DECEMBER 2018
Dwg No: I29584-DISC-5b/45

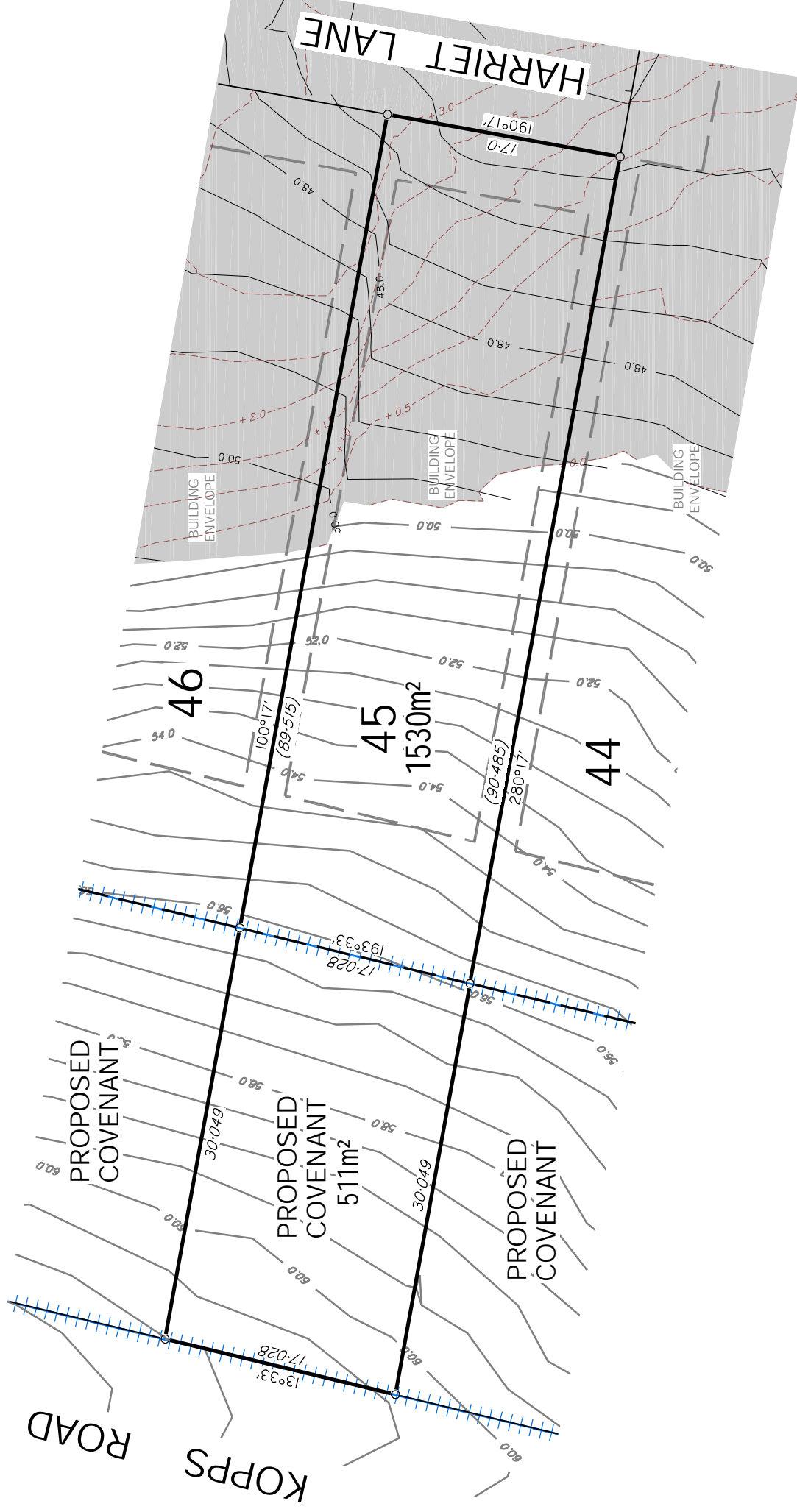
URBEX No. 110 Pty Ltd



RPS Australia East Pty Ltd  
 ACN 140 292 762  
 ABN 44 140 292 762  
 Lakeside Corporate Space, Suite 425, Level 2  
 Building 4, 34-36 Glenferrie Drive,  
 Robina PO Box 1048 Robina DC, Qld 4226

T +61 7 555 36900  
 F +61 7 555 36999  
 W rpsgroup.com.au

© COPYRIGHT PROTECTS THIS PLAN  
 Unauthorised reproduction or amendment  
 not permitted. Please contact the author.



### Note:

This plan has been prepared by RPS Australia East Pty Ltd (ACN 140 292 762), which is registered with the Surveyors Board of Queensland as a Cadastral Surveyor.

# DISCLOSURE PLAN

## FOR PROPOSED LOT 46

Proposed Lot 46 is currently described as part of Lot 1 on RP159050, situated at Maudsland on Kopps Road.

The Planning & Environmental Court Order BD4979 of 2016 included Proposed Lot 46 and was approved by The Planning & Environmental Court on the 24 March 2017, subject to conditions.

### LEGEND

- 6.0 — EXISTING SURFACE LEVEL CONTOUR (0.5m INTERVAL)
- - - +6.0 - - - DESIGN FILL CONTOUR (0.5m INTERVAL)
- 6.0 — DESIGN SURFACE LEVEL CONTOUR (0.5m INTERVAL)
- AREA OF FILL
- — — FOR RETAINING WALL CONSTRUCTION DETAIL  
SEE ENGINEERING CIVIL O.P.W. PLANS
- +++++ COVENANT AREA DELINEATION FENCING

### Builders Note:

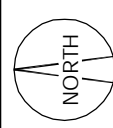
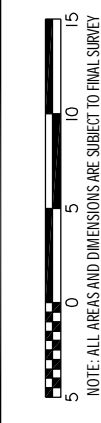
Builders shall not build off the design levels shown; a site survey is required. This note is an integral part of this plan.

### Engineering Note:

Engineering design information supplied digitally by Mortons Urban Solutions. September 2018

### Compaction Statement:

All earthworks shall be carried out in Accordance with AS3798 -2007 with a testing regime in accordance with AS2007-1996 and further compaction methodology in Accordance with AS3798-1996



Local Authority: Gold Coast City
Height Datum: AHD
Height Origin: PMI72323 RL 39.402
Contour Interval: 0.5 m
Fill Contours: CUTFILL_DISCLOSURE
ENG: DCONT_DISCLOSURE
BDY: I29584-LOTS-2017-08-10
Surveyor: AJC
Drawn: BJB
Scale: 1: 400 @ A3
Date: 7 DECEMBER 2018
Dwg No: I29584-DISC-5b/46

URBEX No. 110 Pty Ltd



RPS Australia East Pty Ltd  
ACN 140 292 762  
ABN 44 140 292 762  
Lakeside Corporate Space, Suite 425, Level 2  
Building 4, 34-36 Glenferrie Drive,  
Robina PO Box 1048 Robina DC, Qld 4226

T +61 7 555 36900  
F +61 7 555 36999  
W rpsgroup.com.au

© COPYRIGHT PROTECTS THIS PLAN  
Unauthorised reproduction or amendment  
not permitted. Please contact the author.



### Note:

This plan has been prepared by RPS Australia East Pty Ltd (ACN 140 292 762), which is registered with the Surveyors Board of Queensland as a Cadastral Surveyor.

# DISCLOSURE PLAN

## FOR PROPOSED LOT 47

Proposed Lot 47 is currently described as part of Lot 1 on RP159050, situated at Maudsland on Kopps Road.

The Planning & Environmental Court Order BD4979 of 2016 included Proposed Lot 47 and was approved by The Planning & Environmental Court on the 24 March 2017, subject to conditions.

### LEGEND

- 6.0 — EXISTING SURFACE LEVEL CONTOUR (0.5m INTERVAL)
- - - +6.0 - - - DESIGN FILL CONTOUR (0.5m INTERVAL)
- 6.0 — DESIGN SURFACE LEVEL CONTOUR (0.5m INTERVAL)
- AREA OF FILL
- — — FOR RETAINING WALL CONSTRUCTION DETAIL SEE ENGINEERING CIVIL O.P.W. PLANS
- +++++ COVENANT AREA DELINEATION FENCING

### Builders Note:

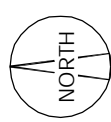
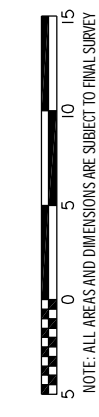
Builders shall not build off the design levels shown; a site survey is required. This note is an integral part of this plan.

### Engineering Note:

Engineering design information supplied digitally by Mortons Urban Solutions. September 2018

### Compaction Statement:

All earthworks shall be carried out in Accordance with AS3798 -2007 with a testing regime in accordance with AS2007-1996 and further compaction methodology in Accordance with AS3798-1996



Local Authority: Gold Coast City
Height Datum: AHD
Height Origin: PM172323 RL 39.402
Contour Interval: 0.5 m
Fill Contours: CUTFILL_DISCLOSURE
ENG: DCONT_DISCLOSURE
BDY: I29584-LOTS-2017-08-10
Surveyor: AJC
Drawn: BJB
Scale: 1: 400 @ A3
Date: 7 DECEMBER 2018
Dwg No: I29584-DISC-5b/47

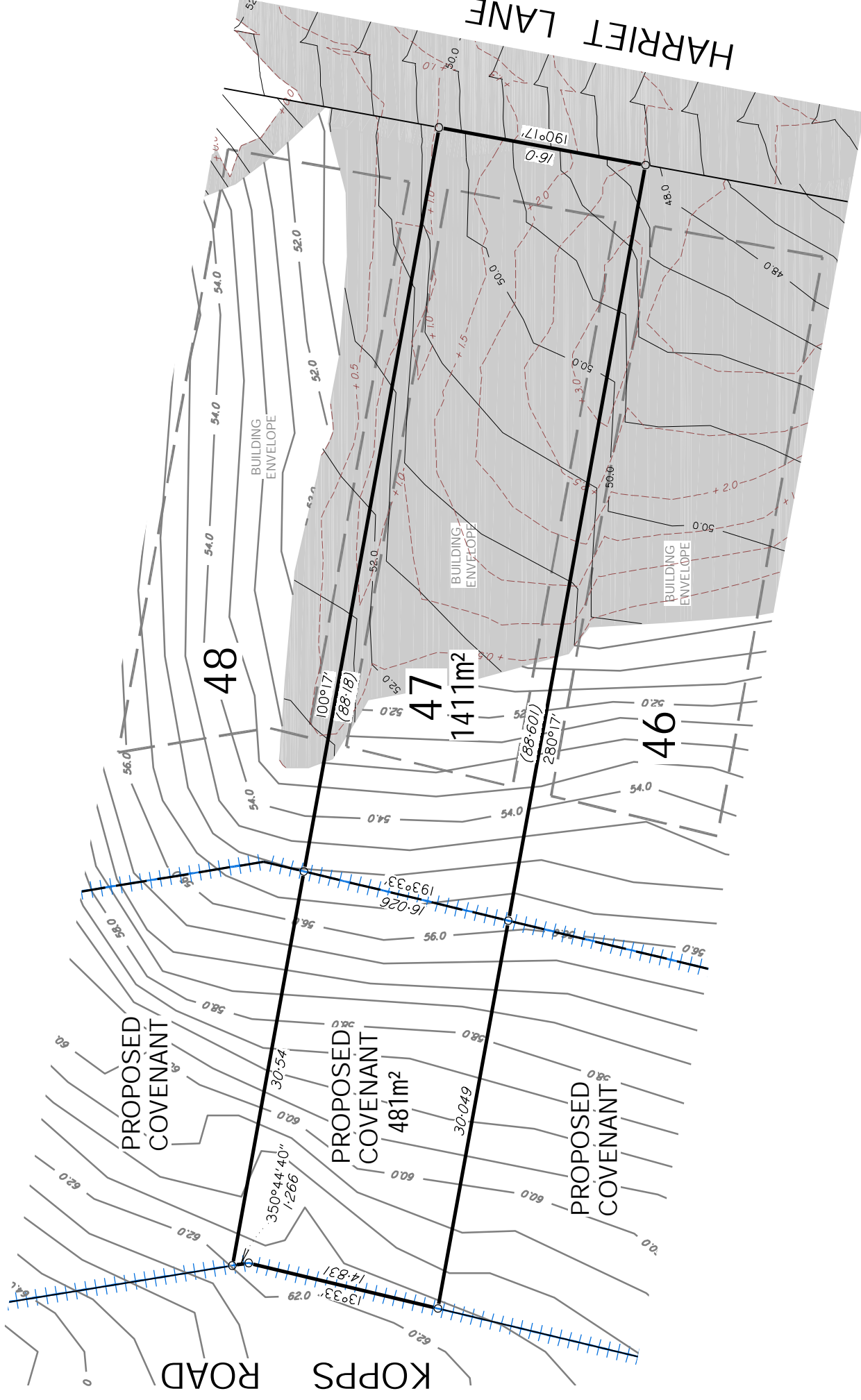
URBEX No. 110 Pty Ltd



RPS Australia East Pty Ltd  
 ACN 140 292 762  
 ABN 44 140 292 762  
 Lakeside Corporate Space, Suite 425, Level 2  
 Building 4, 34-36 Glenferrie Drive,  
 Robina PO Box 1048 Robina DC, Qld 4226

T +61 7 555 36900  
 F +61 7 555 36999  
 W rpsgroup.com.au

© COPYRIGHT PROTECTS THIS PLAN  
 Unauthorised reproduction or amendment  
 not permitted. Please contact the author.



### Note:

This plan has been prepared by RPS Australia East Pty Ltd (ACN 140 292 762), which is registered with the Surveyors Board of Queensland as a Cadastral Surveyor.

# DISCLOSURE PLAN

## FOR PROPOSED LOT 48

Proposed Lot 48 is currently described as part of Lot 1 on RP159050, situated at Maudsland on Kopps Road.

The Planning & Environmental Court Order BD4979 of 2016 included Proposed Lot 48 and was approved by The Planning & Environmental Court on the 24 March 2017, subject to conditions.

### LEGEND

- 6.0 — EXISTING SURFACE LEVEL CONTOUR (0.5m INTERVAL)
- - - +6.0 - - - DESIGN FILL CONTOUR (0.5m INTERVAL)
- 6.0 — DESIGN SURFACE LEVEL CONTOUR (0.5m INTERVAL)
- AREA OF FILL
- — — FOR RETAINING WALL CONSTRUCTION DETAIL  
SEE ENGINEERING CIVIL O.P.W. PLANS
- +++++ COVENANT AREA DELINEATION FENCING

### Builders Note:

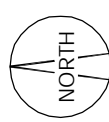
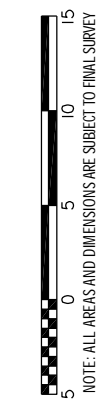
Builders shall not build off the design levels shown; a site survey is required. This note is an integral part of this plan.

### Engineering Note:

Engineering design information supplied digitally by Mortons Urban Solutions. September 2018

### Compaction Statement:

All earthworks shall be carried out in Accordance with AS3798 -2007 with a testing regime in accordance with AS2007-1996 and further compaction methodology in Accordance with AS3798-1996



Local Authority : Gold Coast City
Height Datum : AHD
Height Origin: PMI72323 RL 39.402
Contour Interval : 0.5 m
Fill Contours : CUTFILL_DISCLOSURE
ENG : DCONT_DISCLOSURE
BDY : I29584-LOTS-2017-08-10
Surveyor: AJC
Drawn : BJB
Scale : 1: 400 @ A3
Date: 7 DECEMBER 2018
Dwg No: I29584-DISC-5b/48

URBEX No. 110 Pty Ltd



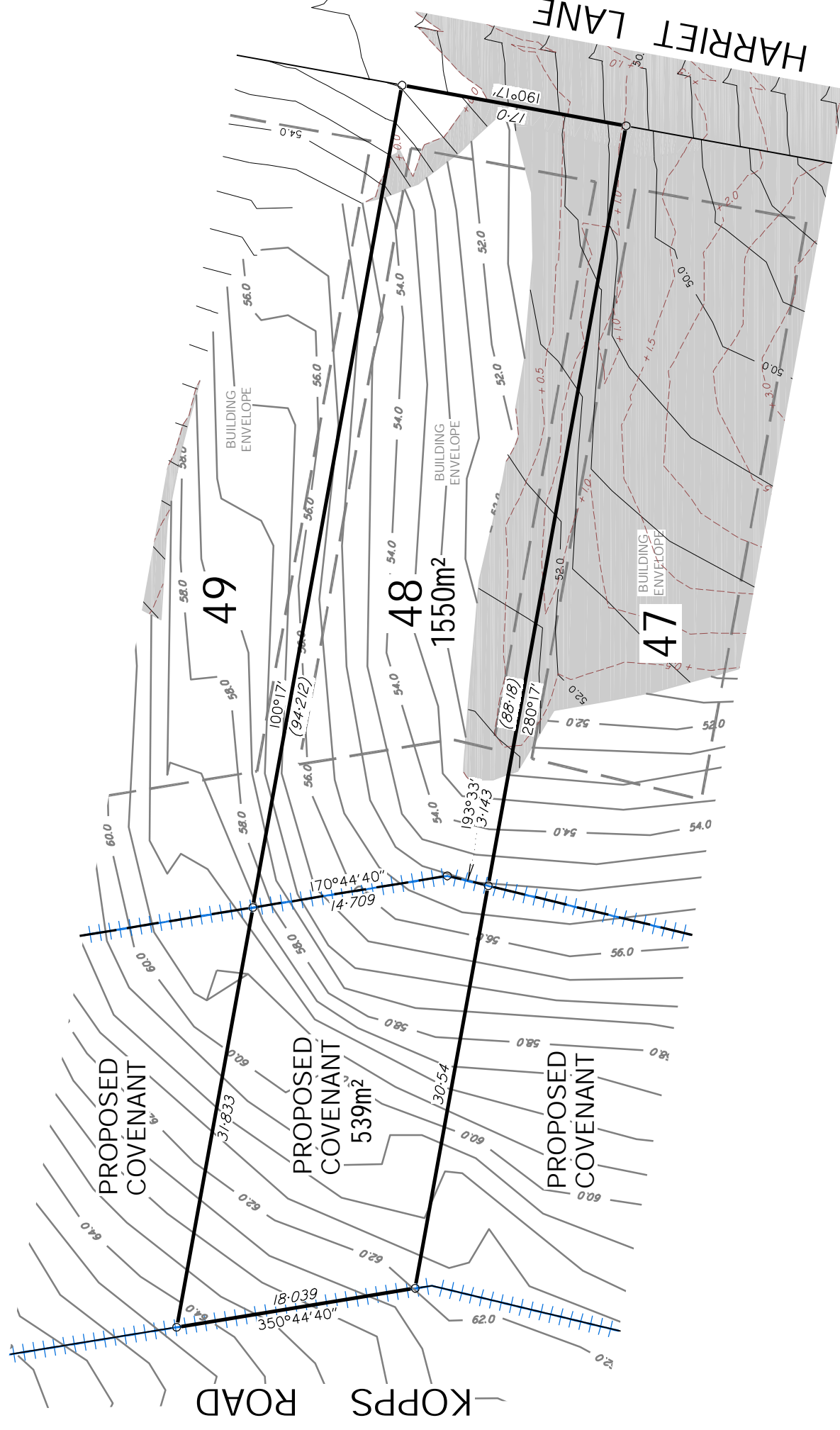
RPS Australia East Pty Ltd  
ACN 140 292 762  
ABN 44 140 292 762

Lakeside Corporate Space, Suite 425, Level 2  
Building 4, 34-36 Glenferrie Drive,  
Robina PO Box 1048 Robina DC, Qld 4226

T +61 7 555 36900  
F +61 7 555 36999

W [rpsgroup.com.au](http://rpsgroup.com.au)

© COPYRIGHT PROTECTS THIS PLAN  
Unauthorised reproduction or amendment  
not permitted. Please contact the author.



### Note:

This plan has been prepared by RPS Australia East Pty Ltd (ACN 140 292 762), which is registered with the Surveyors Board of Queensland as a Cadastral Surveyor.

# DISCLOSURE PLAN

## FOR PROPOSED LOT 49

Proposed Lot 49 is currently described as part of Lot 1 on RP159050, situated at Maudsland on Kopps Road.

The Planning & Environmental Court Order BD4979 of 2016 included Proposed Lot 49 and was approved by The Planning & Environmental Court on the 24 March 2017, subject to conditions.

### LEGEND

- 6.0 — EXISTING SURFACE LEVEL CONTOUR (0.5m INTERVAL)
- - - +6.0 - - - DESIGN FILL CONTOUR (0.5m INTERVAL)
- 6.0 — DESIGN SURFACE LEVEL CONTOUR (0.5m INTERVAL)
- AREA OF FILL
- — — FOR RETAINING WALL CONSTRUCTION DETAIL SEE ENGINEERING CIVIL O.P.W. PLANS
- +++++ COVENANT AREA DELINEATION FENCING

### Builders Note:

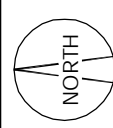
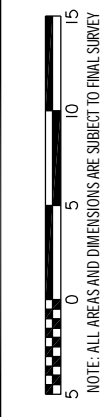
Builders shall not build off the design levels shown; a site survey is required. This note is an integral part of this plan.

### Engineering Note:

Engineering design information supplied digitally by Mortons Urban Solutions. September 2018

### Compaction Statement:

All earthworks shall be carried out in Accordance with AS3798 -2007 with a testing regime in accordance with AS2007-1996 and further compaction methodology in Accordance with AS3798-1996



Local Authority: Gold Coast City
Height Datum: AHD
Height Origin: PMI72323 RL 39-402
Contour Interval: 0.5 m
Fill Contours: CUTFILL_DISCLOSURE
ENG: DCONT_DISCLOSURE
BDY: I29584-LOTS-2017-08-10
Surveyor: AJC
Drawn: BJB
Scale: 1: 400 @ A3
Date: 7 DECEMBER 2018
Dwg No: I29584-DISC-5b/49

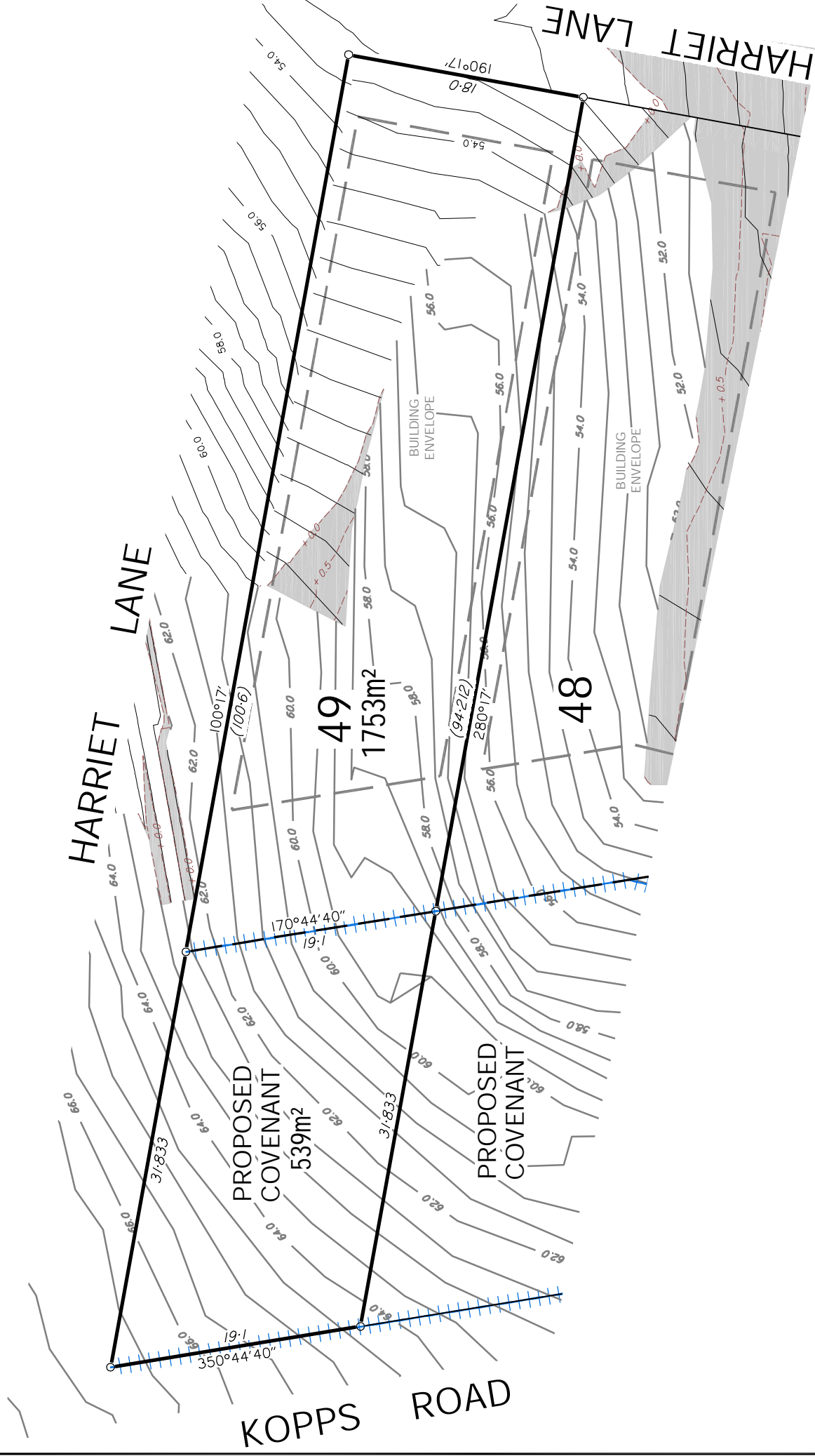
URBEX No. 110 Pty Ltd



RPS Australia East Pty Ltd  
 ACN 140 292 762  
 ABN 44 140 292 762  
 Lakeside Corporate Space, Suite 425, Level 2  
 Building 4, 34-36 Glenferrie Drive,  
 Robina PO Box 1048 Robina DC, Qld 4226

T +61 7 555 36900  
 F +61 7 555 36999  
 W rpsgroup.com.au

© COPYRIGHT PROTECTS THIS PLAN  
 Unauthorised reproduction or amendment  
 not permitted. Please contact the author.



### Note:

This plan has been prepared by RPS Australia East Pty Ltd (ACN 140 292 762), which is registered with the Surveyors Board of Queensland as a Cadastral Surveyor.